

Department of Architecture and Civil Engineering

Key words

Architecture, architect, design, workshop, renovation



Master / Associate Professor

Toshitaka Shimizu

Education

Fukui University Faculty of Engineering Department of Architecture, Fukui University Graduate School of Engineering Department of Architecture Completed

Professional Background

Yuzuru Tominaga + form system institute, Shimizu Architects Workshop, Tokyo Design Academy Lecturer, Vantan Design Institute Lecturer, Roppongi Art Night 2015 Participating Artist, Discovery Fukui 2019 Unit Master

Consultations, Lectures, and Collaborative Research Themes

Architectural design, advice on design, coaching, etc.

e-mail address

shimizu-t@fukui-ut.ac.jp

Main research themes and their characteristics

[Garage spec Musashikoyama] (photo1)

It is a condominium building of 18 units built near the Musashikoyama station of Tokyu Meguro line in Shinagawa-ku, Tokyo, just outside the vibrant arcade shopping street with a downtown atmosphere. It is a 6m long east-west site with a 6m road on the east side and a green path on the west side. On the north-south side, town factories, multi-family houses, and detached houses are approaching.

the site continues from the front road to the back which is a space like "Yokocho" scattered around this neighborhood. To capture the characteristics of this site, the maisonette and triplet with the first floor as a garage space dwelling units were piled up in a cross-section intertwined with each other, and they were lined up facing a new "Yokocho" that was set up.

Taking into consideration the openings of adjacent factories, condominiums, and houses, we will find the gaps in the surrounding buildings and open the openings to obtain a line of sight that goes outside the site and into the city. Furthermore, by repairing and painting the outer wall of the neighboring factory facing the side street, the factory wall is regarded as a landscape. I tried to create a comfortable sense of scale by incorporating the external space set up like a long and narrow plaza into the living space.

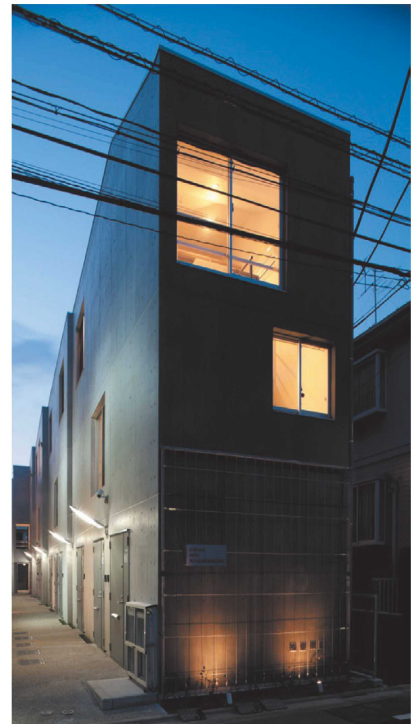


photo.1 Garage spec Musashikoyama Evening scene

[Cotetra workshop] (photo2)

The three-dimensional modeling named Cotetra is from a simple solid such as a regular tetrahedron that connects a commercially available straw and a Zern clip to a pyramid-shaped solid approaching 10 m in height and a fuller dome with a diameter of 5 m and a height of 2.5 m. Anyone can easily create complex shapes. I have held workshops at various events so far. Anyone can develop various sizes and forms Utilizing the characteristics that can be produced, we are looking for more appropriate modeling, practice methods, and management methods with students of Shimizu laboratory at our university.



photo.2 Strodome with a diameter of 5 m

Major academic publications

Medical Welfare Architecture Award 2004: Angel Hospital (in charge of Yuzuru Tominaga + form system institute)

14th Fukui City Cityscape Award: House in Keya House 2006

Shinkentiku 2012.08 Issue: Garage Spec MusashiKoyama

Roppongi Art Night 2015 Participating artists

Organized by Tokyo Metropolitan Government, ROPPONGI ART NIGHT 2015, Holding a workshop